

# NWQ Suncoast Pkwy and Spring Hill Dr, Spring Hill FL 34609

## One Remaining Restaurant, Retail Pad Available

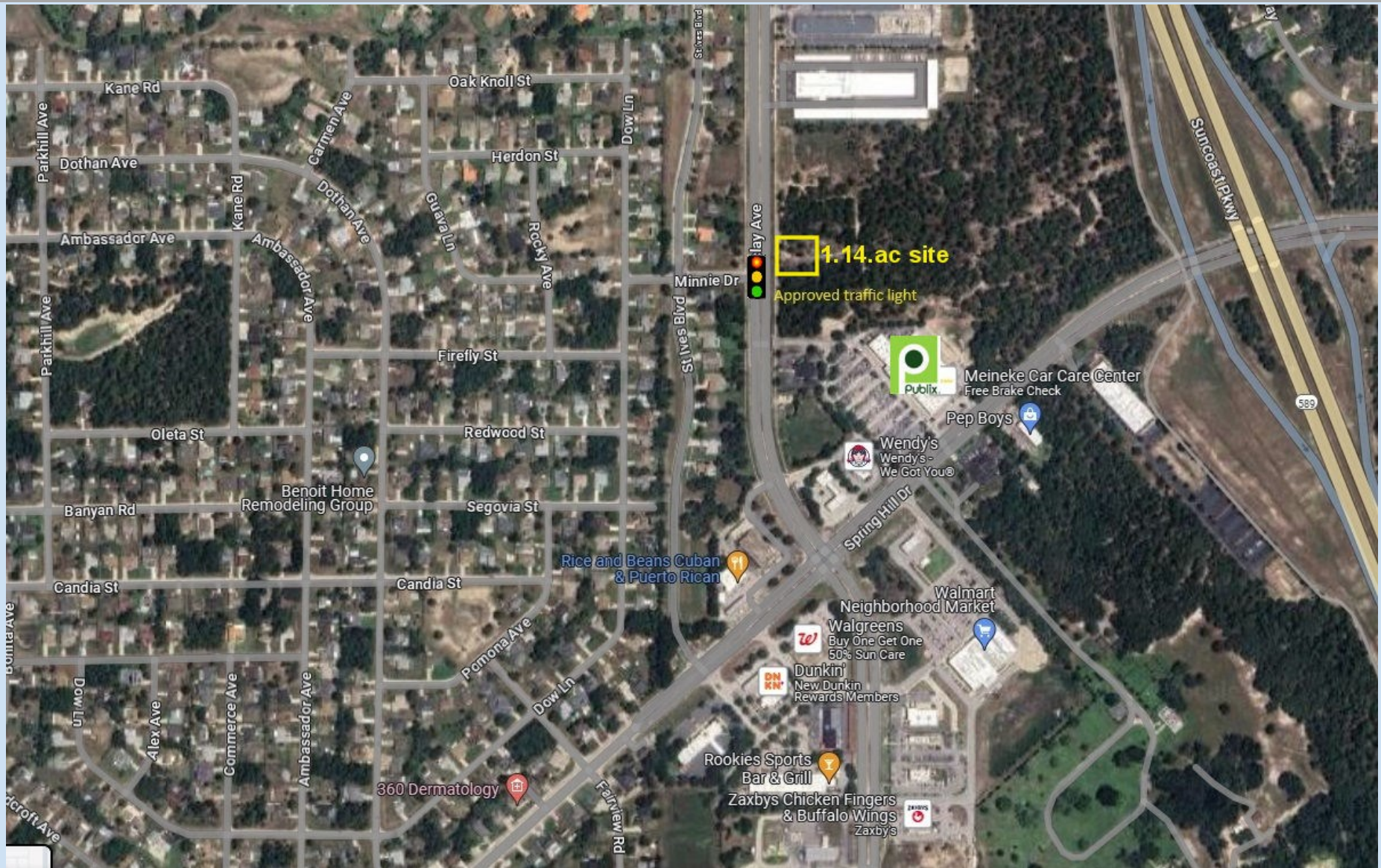


**Southeast Commercial—FL**  
1341 Bedford Ave, Suite A  
Melbourne FL 32940  
cbaum@seasouthcommercial.net  
www.SoutheastCommercial-FL.com

**Carol Bauman**  
Licensed Real Estate Broker  
813.992.9696 Mobile  
321.600.4200 Office



## 1.14 ac Pad Remaining for Lease



### Southeast Commercial—FL

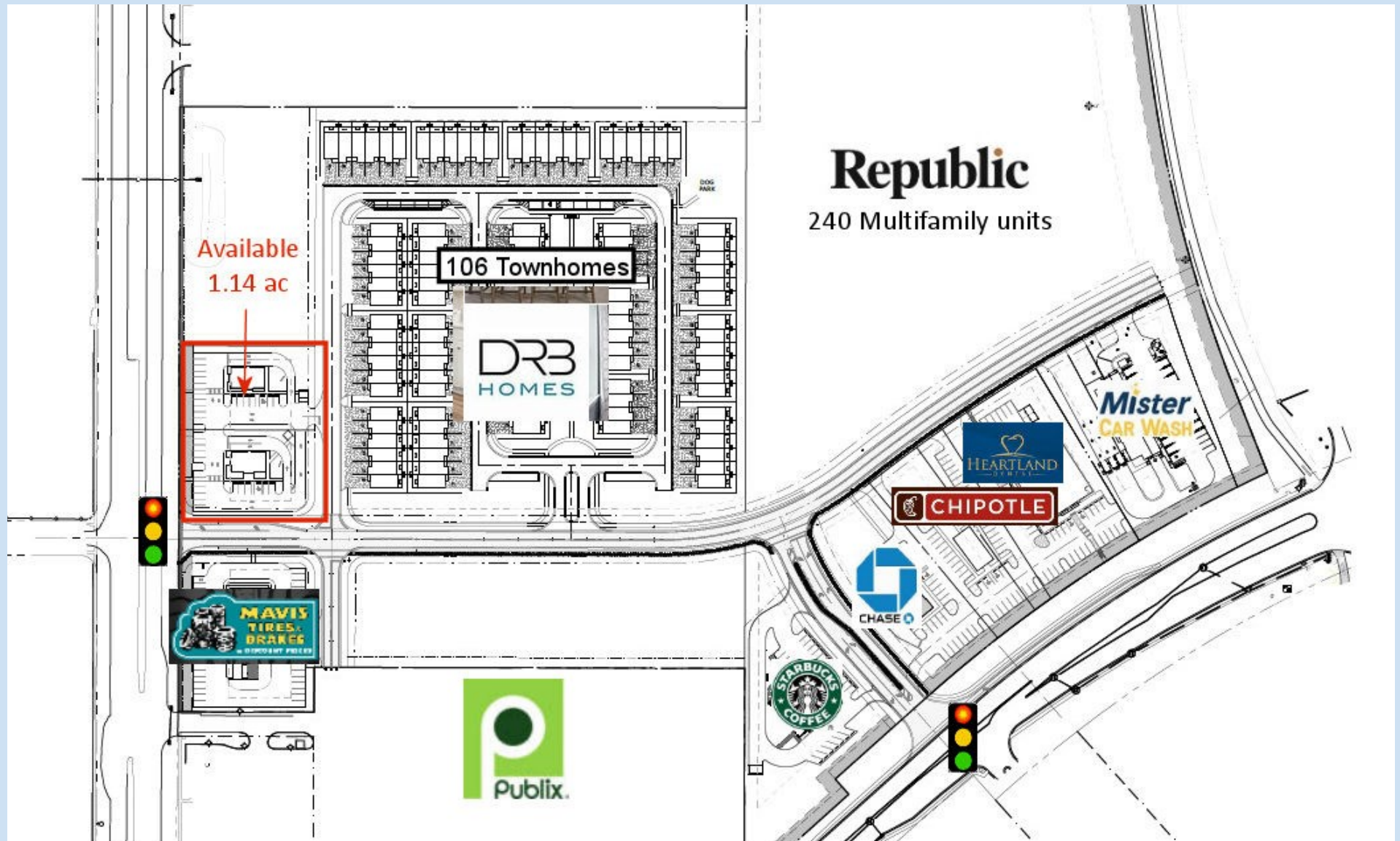
1341 Bedford Ave, Suite A  
Melbourne FL 32940  
cbauman@southeastcommercial.net  
www.SoutheastCommercial-FL.com

### Carol Bauman

Licensed Real Estate Broker  
813.992.9696 Mobile  
321.600.4200 Office

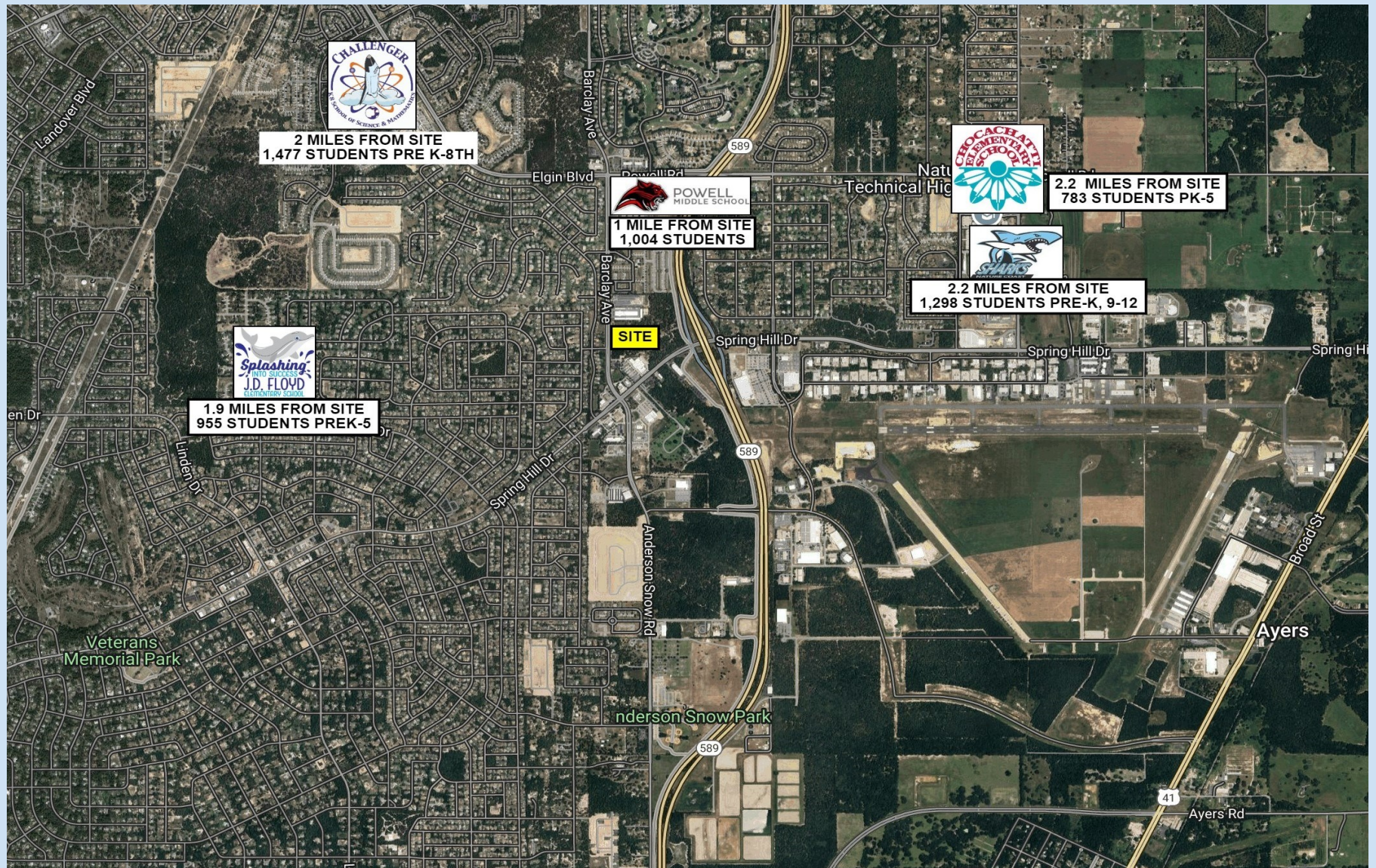


# Site Plan





# Local Schools

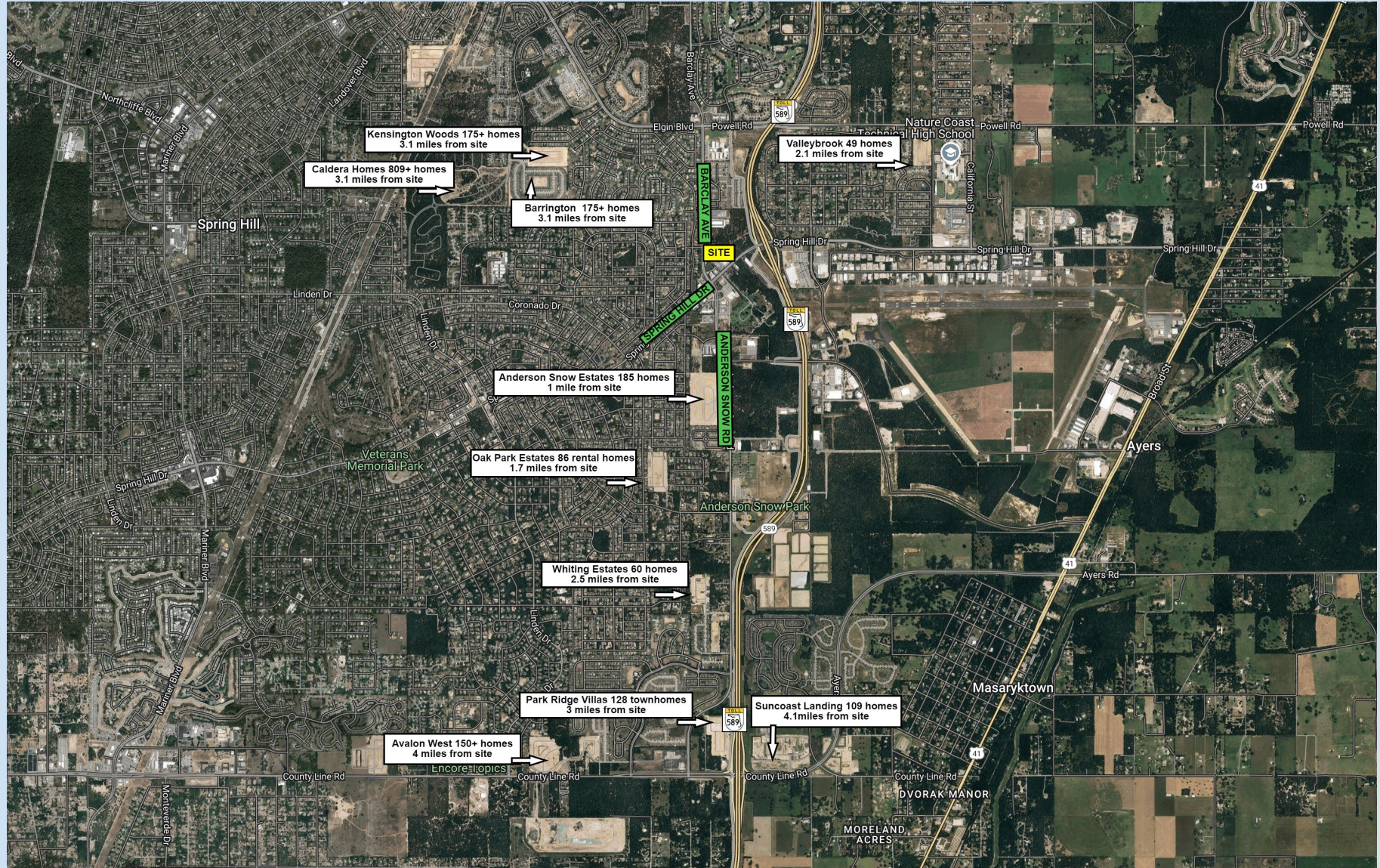


**Southeast Commercial—FL**  
1341 Bedford Ave, Suite A  
Melbourne FL 32940  
cbauman@southeastcommercial.net  
www.SoutheastCommercial-FL.com

**Carol Bauman**  
Licensed Real Estate Broker  
813.992.9696 Mobile  
321.600.4200 Office



# New Housing under Development



**Southeast Commercial—FL**  
 1341 Bedford Ave, Suite A  
 Melbourne FL 32940  
[cbauman@southeastcommercial.net](mailto:cbauman@southeastcommercial.net)  
[www.SoutheastCommercial-FL.com](http://www.SoutheastCommercial-FL.com)

**Carol Bauman**  
 Licensed Real Estate Broker  
 813.992.9696 Mobile  
 321.600.4200 Office



# Property Highlights

- 37 ac mixed use project, includes 5.3 ac commercial land, fronting Spring Hill Dr at the prime location of NWQ Spring Hill Dr and Suncoast Pkwy (SR 589) and 1.76 ac fronting Barclay Ave
- Zoned PD, residential, retail, restaurant with drive-thru, office, medical and dental, financial institutions
- Master development project includes entitlements for 336 multi-family units (available) and 100 townhomes
- Site is bordered on the east by the Suncoast Trail, a 42 mile paved trail that stretches from Hillsborough County through Pasco and ending in Hernando County.
- Offsite storm water, rough grade, utilities and master infrastructure will be in place
- Approved traffic light with full access as well as an additional approved traffic light at Barclay Avenue to the west
- Cross access with Publix, in Barclay Crossing Shopping Center

Outlot #1	Under Contract
Outlot #2	Under contract
Outlot #3	Under Contract
Outlot #4	Under Contract
Outlot #5	.57ac available
Outlot #6	.57ac available

Outlot #7	Under Contract
Outlot #8	Under Contract
Available for sale, or ground lease	
Pricing: contact broker	



**Southeast Commercial—FL**  
1341 Bedford Ave, Suite A  
Melbourne FL 32940  
cbauman@southeastcommercial.net  
www.SoutheastCommercial-FL.com

**Carol Bauman**  
Licensed Real Estate Broker  
813.992.9696 Mobile  
321.600.4200 Office

# Area Highlights

- Expanding suburban trade area of the Tampa-St Petersburg-Clearwater MSA
- The adjacent Suncoast Parkway and US 41 connects to nearby I-75, and SR 50 for streamlined travel to Tampa, Orlando and other statewide destinations
- Join Publix, Walmart, Target, Kohls and many other area retailers
- Bravera Health Spring Hospital: just 5 miles from site with 124 beds
- Brooksville-Tampa Bay Regional Airport & Technology Center (BKV): under 1 mile from site, a General Aviation Airport and 2,400 ac technology campus with aircraft services, and manufacturing

## Demographics

	1 mile	3 miles	5 miles
Median HH Income	\$89,771	\$80,404	\$70,729
Median Age	44.4	41.6	44.5
Population	6,749	44,680	96,290

## Traffic Count

Barclay Ave ADT 24,000

Springhill Dr ADT 24,500



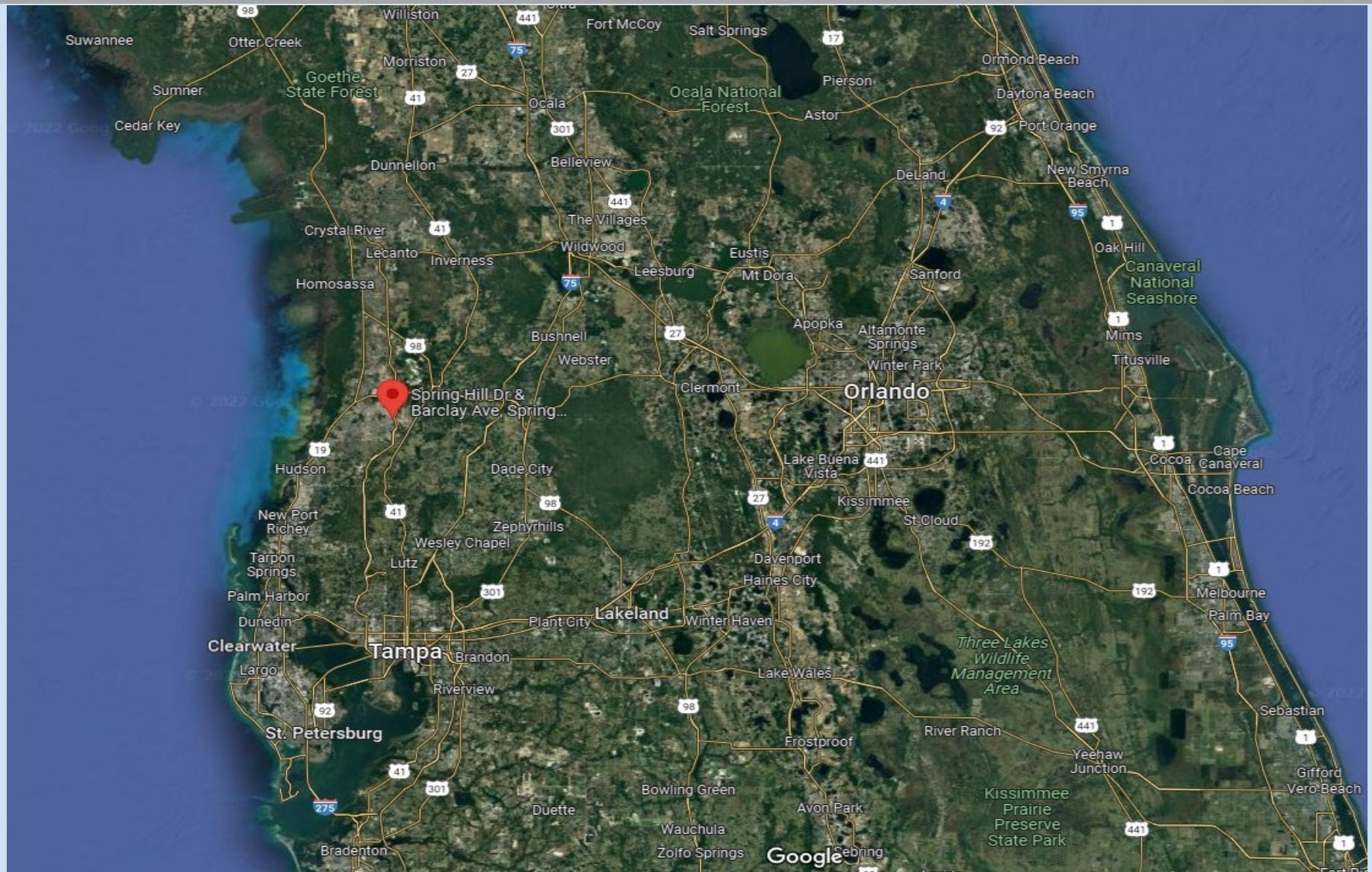
### Southeast Commercial—FL

1341 Bedford Ave, Suite A  
Melbourne FL 32940  
cbauman@southeastcommercial.net  
www.SoutheastCommercial-FL.com

### Carol Bauman

Licensed Real Estate Broker  
813.992.9696 Mobile  
321.600.4200 Office

# Florida Location Overview



**SOUTHEAST**  
COMMERCIAL

## Southeast Commercial—FL

1341 Bedford Ave, Suite A  
Melbourne FL 32940  
cbauman@southeastcommercial.net  
www.SoutheastCommercial-FL.com

## Carol Bauman

Licensed Real Estate Broker  
813.992.9696 Mobile  
321.600.4200 Office